

Alarm Status

Low		OK
High		Fail

Recorder Info

Serial # : 0010017494	Model : HAXO-8	Battery : OK	Trip # : 113
User ID : cmro II STATIE TROACA 09 06			

Recorder Configuration

Start type : Date/Time start	Temperature alarms	Humidity alarms
Start delay : None	Lower : -30.0 °C after 2 Consecutive	Lower : 10.0 %RH
Interval : 5 Minutes	Upper : 50.0 °C after 2 Consecutive	Upper : 100.0 %RH
Alert indicator : Enabled lower & upper		
OK indicator : Enabled		

Recorded Data

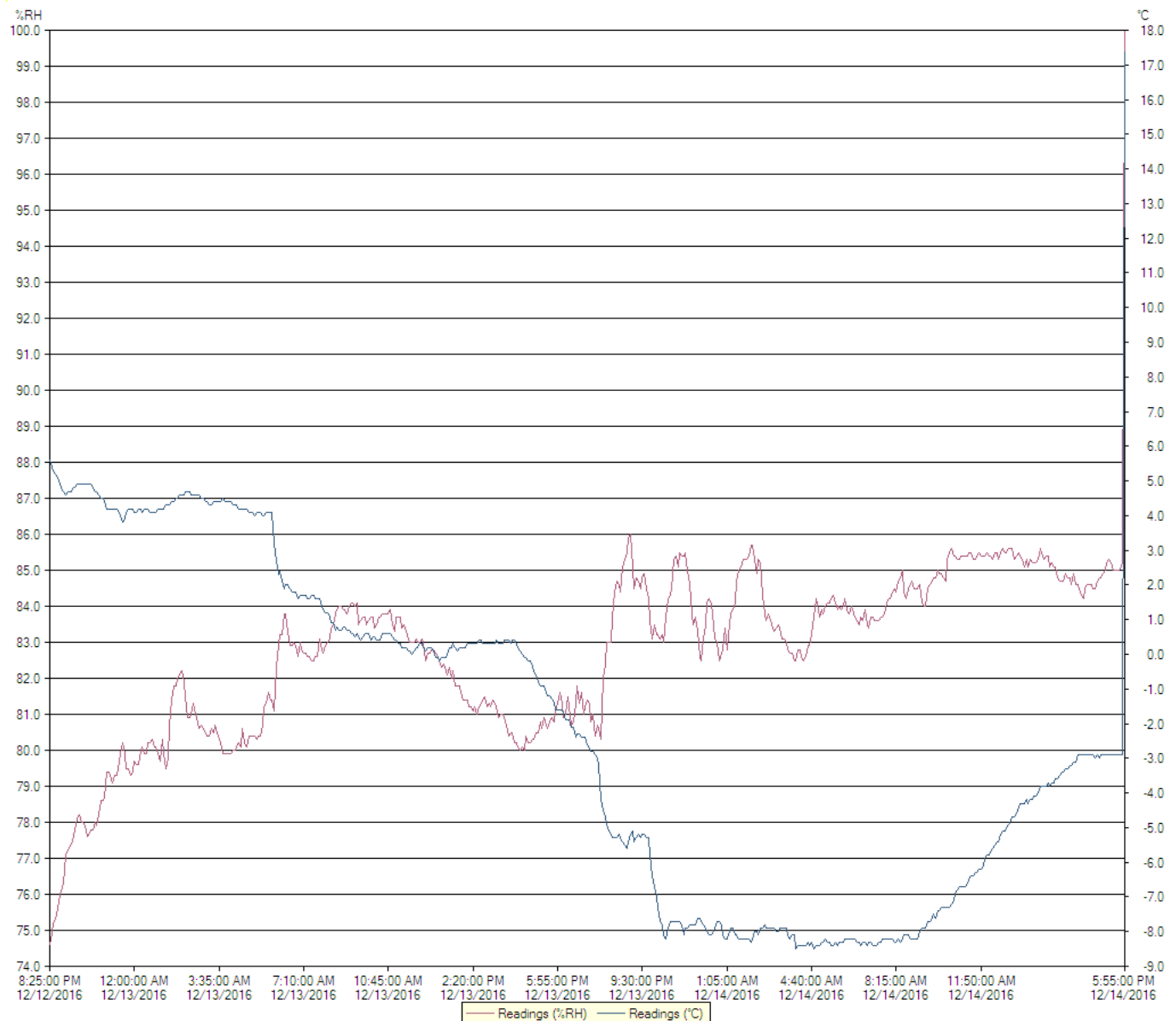
First reading : 12/12/2016 8:25:00 PM	Temperature statistics	Humidity statistics
Last reading : 12/14/2016 5:55:00 PM	Lowest : -8.5 °C	Lowest : 74.6 %RH
Elapsed Time : 1 Day, 21 Hours, 30 Minutes	@ 12/14/2016 4:00:00 AM	@ 12/12/2016 8:25:00 PM
Total readings : 547	Highest : 17.4 °C	Highest : 100.0 %RH
First evaluated : 12/12/2016 8:25:00 PM	@ 12/14/2016 5:55:00 PM	@ 12/14/2016 5:55:00 PM
Last evaluated : 12/14/2016 5:55:00 PM	Average reading : -2.2 °C	Average reading : 82.7 %RH
Evaluated Time : 1 Day, 21 Hours, 30 Minutes	Standard Deviation (S) : 4.8 °C	Standard Deviation (S) : 2.3 %RH
Evaluated Readings : 547	Mean Kinetic : -0.72 °C	

Low Alarm

Temperature	Triggered : (none)
	Time below : (none)
	Occurrences : 0
	°C - Minutes below : 0.00
Humidity	Triggered : (none)
	Time below : (none)
	Occurrences : 0

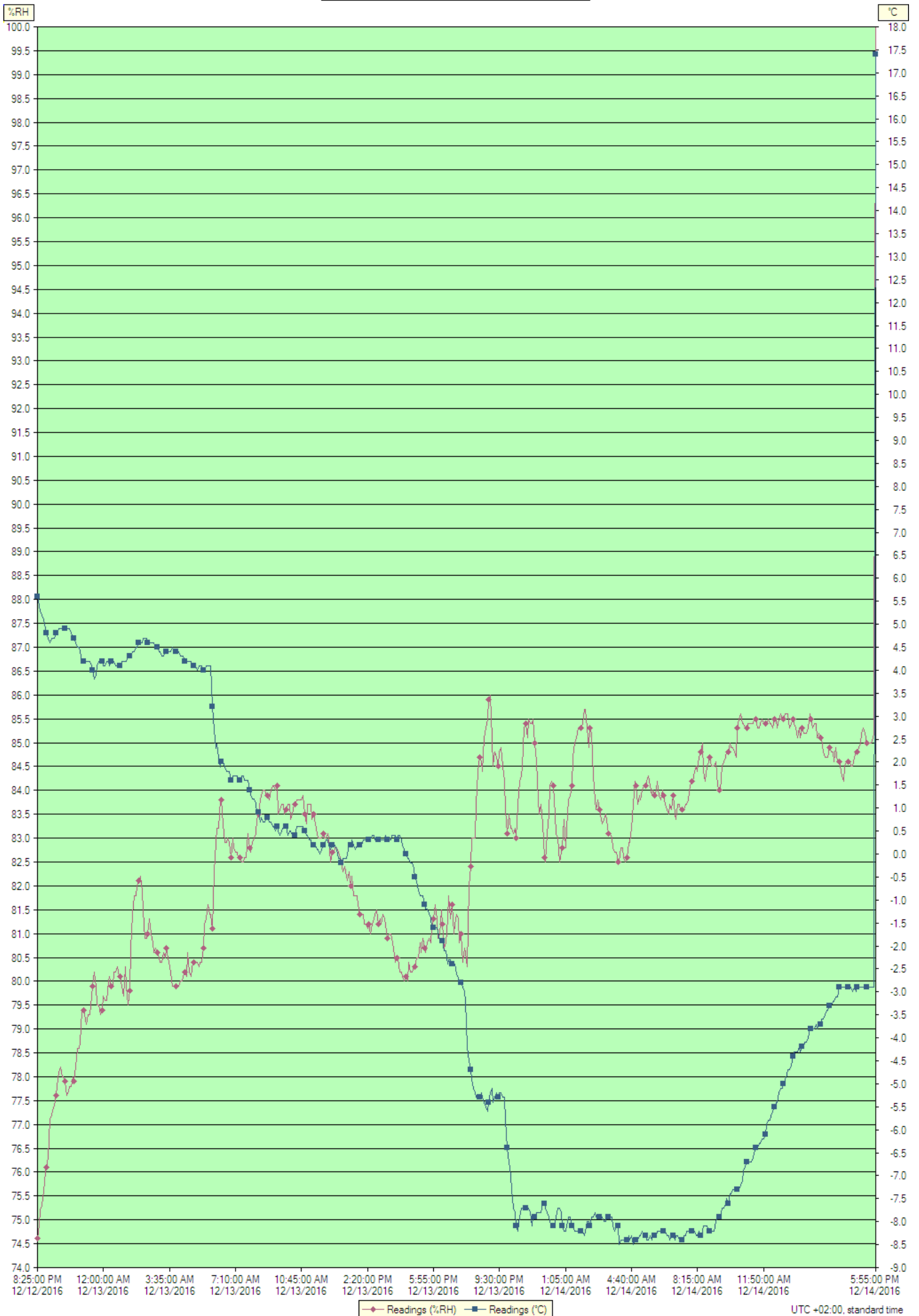
High Alarm

Temperature	Triggered : (none)
	Time above : (none)
	Occurrences : 0
	°C - Minutes above : 0.00
Humidity	Triggered : @ 12/14/2016 5:55:00 PM
	Time above : (none)
	Occurrences : 1



Chart

0010017494 - cmro II STATIE TROACA 09 06



UTC +02:00, standard time

Index	Date	Time	%RH	°C
1	12/12/2016	8:25:00 PM	74.6	5.6
2	12/12/2016	8:30:00 PM	74.9	5.4
3	12/12/2016	8:35:00 PM	75.2	5.3
4	12/12/2016	8:40:00 PM	75.3	5.2
5	12/12/2016	8:45:00 PM	75.6	5.1
6	12/12/2016	8:50:00 PM	76.0	4.9
7	12/12/2016	8:55:00 PM	76.1	4.8
8	12/12/2016	9:00:00 PM	76.3	4.7
9	12/12/2016	9:05:00 PM	77.1	4.6
10	12/12/2016	9:10:00 PM	77.2	4.7
11	12/12/2016	9:15:00 PM	77.3	4.7
12	12/12/2016	9:20:00 PM	77.4	4.7
13	12/12/2016	9:25:00 PM	77.6	4.8
14	12/12/2016	9:30:00 PM	77.8	4.8
15	12/12/2016	9:35:00 PM	78.1	4.9
16	12/12/2016	9:40:00 PM	78.2	4.9
17	12/12/2016	9:45:00 PM	78.0	4.9
18	12/12/2016	9:50:00 PM	78.0	4.9
19	12/12/2016	9:55:00 PM	77.9	4.9
20	12/12/2016	10:00:00 PM	77.6	4.9
21	12/12/2016	10:05:00 PM	77.7	4.9
22	12/12/2016	10:10:00 PM	77.8	4.9
23	12/12/2016	10:15:00 PM	77.8	4.8
24	12/12/2016	10:20:00 PM	78.0	4.7
25	12/12/2016	10:25:00 PM	77.9	4.7
26	12/12/2016	10:30:00 PM	78.2	4.6
27	12/12/2016	10:35:00 PM	78.6	4.5
28	12/12/2016	10:40:00 PM	78.6	4.5
29	12/12/2016	10:45:00 PM	78.7	4.4
30	12/12/2016	10:50:00 PM	79.4	4.2
31	12/12/2016	10:55:00 PM	79.4	4.2
32	12/12/2016	11:00:00 PM	79.2	4.2
33	12/12/2016	11:05:00 PM	79.1	4.2
34	12/12/2016	11:10:00 PM	79.3	4.2
35	12/12/2016	11:15:00 PM	79.3	4.2
36	12/12/2016	11:20:00 PM	79.7	4.1
37	12/12/2016	11:25:00 PM	79.9	4.0
38	12/12/2016	11:30:00 PM	80.2	3.8
39	12/12/2016	11:35:00 PM	79.9	3.9
40	12/12/2016	11:40:00 PM	79.5	4.1
41	12/12/2016	11:45:00 PM	79.5	4.2
42	12/12/2016	11:50:00 PM	79.3	4.2
43	12/12/2016	11:55:00 PM	79.4	4.2
44	12/13/2016	12:00:00 AM	79.7	4.1
45	12/13/2016	12:05:00 AM	79.6	4.1
46	12/13/2016	12:10:00 AM	79.6	4.2
47	12/13/2016	12:15:00 AM	80.0	4.2
48	12/13/2016	12:20:00 AM	80.1	4.1
49	12/13/2016	12:25:00 AM	79.9	4.2
50	12/13/2016	12:30:00 AM	79.9	4.2
51	12/13/2016	12:35:00 AM	80.2	4.2
52	12/13/2016	12:40:00 AM	80.2	4.1
53	12/13/2016	12:45:00 AM	80.3	4.1
54	12/13/2016	12:50:00 AM	80.1	4.1
55	12/13/2016	12:55:00 AM	80.1	4.1
56	12/13/2016	1:00:00 AM	79.9	4.2
57	12/13/2016	1:05:00 AM	79.7	4.2
58	12/13/2016	1:10:00 AM	80.3	4.2
59	12/13/2016	1:15:00 AM	79.9	4.2
60	12/13/2016	1:20:00 AM	79.5	4.3
61	12/13/2016	1:25:00 AM	79.8	4.3
62	12/13/2016	1:30:00 AM	80.7	4.3
63	12/13/2016	1:35:00 AM	81.4	4.4
64	12/13/2016	1:40:00 AM	81.8	4.4
65	12/13/2016	1:45:00 AM	81.8	4.5
66	12/13/2016	1:50:00 AM	82.0	4.5
67	12/13/2016	1:55:00 AM	82.1	4.6
68	12/13/2016	2:00:00 AM	82.2	4.6
69	12/13/2016	2:05:00 AM	81.9	4.6
70	12/13/2016	2:10:00 AM	81.5	4.7
71	12/13/2016	2:15:00 AM	80.9	4.7
72	12/13/2016	2:20:00 AM	80.9	4.7
73	12/13/2016	2:25:00 AM	81.0	4.6
74	12/13/2016	2:30:00 AM	81.3	4.6
75	12/13/2016	2:35:00 AM	81.0	4.6
76	12/13/2016	2:40:00 AM	80.8	4.6
77	12/13/2016	2:45:00 AM	80.6	4.6

Index	Date	Time	%RH	°C
78	12/13/2016	2:50:00 AM	80.7	4.5
79	12/13/2016	2:55:00 AM	80.6	4.5
80	12/13/2016	3:00:00 AM	80.5	4.4
81	12/13/2016	3:05:00 AM	80.4	4.4
82	12/13/2016	3:10:00 AM	80.4	4.3
83	12/13/2016	3:15:00 AM	80.6	4.3
84	12/13/2016	3:20:00 AM	80.5	4.4
85	12/13/2016	3:25:00 AM	80.7	4.4
86	12/13/2016	3:30:00 AM	80.5	4.4
87	12/13/2016	3:35:00 AM	80.3	4.4
88	12/13/2016	3:40:00 AM	80.2	4.4
89	12/13/2016	3:45:00 AM	79.9	4.5
90	12/13/2016	3:50:00 AM	79.9	4.4
91	12/13/2016	3:55:00 AM	79.9	4.4
92	12/13/2016	4:00:00 AM	79.9	4.4
93	12/13/2016	4:05:00 AM	79.9	4.4
94	12/13/2016	4:10:00 AM	80.0	4.3
95	12/13/2016	4:15:00 AM	80.0	4.3
96	12/13/2016	4:20:00 AM	80.1	4.3
97	12/13/2016	4:25:00 AM	80.2	4.2
98	12/13/2016	4:30:00 AM	80.1	4.2
99	12/13/2016	4:35:00 AM	80.6	4.2
100	12/13/2016	4:40:00 AM	80.2	4.2
101	12/13/2016	4:45:00 AM	80.1	4.2
102	12/13/2016	4:50:00 AM	80.4	4.1
103	12/13/2016	4:55:00 AM	80.4	4.1
104	12/13/2016	5:00:00 AM	80.4	4.1
105	12/13/2016	5:05:00 AM	80.4	4.0
106	12/13/2016	5:10:00 AM	80.3	4.1
107	12/13/2016	5:15:00 AM	80.4	4.1
108	12/13/2016	5:20:00 AM	80.4	4.1
109	12/13/2016	5:25:00 AM	80.7	4.0
110	12/13/2016	5:30:00 AM	81.2	4.0
111	12/13/2016	5:35:00 AM	81.3	4.1
112	12/13/2016	5:40:00 AM	81.6	4.1
113	12/13/2016	5:45:00 AM	81.4	4.1
114	12/13/2016	5:50:00 AM	81.4	4.1
115	12/13/2016	5:55:00 AM	81.1	3.2
116	12/13/2016	6:00:00 AM	82.3	2.7
117	12/13/2016	6:05:00 AM	82.9	2.3
118	12/13/2016	6:10:00 AM	83.2	2.4
119	12/13/2016	6:15:00 AM	83.2	2.1
120	12/13/2016	6:20:00 AM	83.8	1.9
121	12/13/2016	6:25:00 AM	83.8	2.0
122	12/13/2016	6:30:00 AM	83.3	2.0
123	12/13/2016	6:35:00 AM	82.9	1.9
124	12/13/2016	6:40:00 AM	82.9	1.8
125	12/13/2016	6:45:00 AM	83.0	1.8
126	12/13/2016	6:50:00 AM	82.9	1.8
127	12/13/2016	6:55:00 AM	82.6	1.6
128	12/13/2016	7:00:00 AM	83.0	1.7
129	12/13/2016	7:05:00 AM	82.8	1.7
130	12/13/2016	7:10:00 AM	82.7	1.7
131	12/13/2016	7:15:00 AM	82.7	1.7
132	12/13/2016	7:20:00 AM	82.6	1.6
133	12/13/2016	7:25:00 AM	82.6	1.6
134	12/13/2016	7:30:00 AM	82.5	1.7
135	12/13/2016	7:35:00 AM	82.5	1.7
136	12/13/2016	7:40:00 AM	82.6	1.6
137	12/13/2016	7:45:00 AM	82.6	1.6
138	12/13/2016	7:50:00 AM	83.1	1.6
139	12/13/2016	7:55:00 AM	82.8	1.4
140	12/13/2016	8:00:00 AM	82.7	1.3
141	12/13/2016	8:05:00 AM	82.9	1.2
142	12/13/2016	8:10:00 AM	83.0	1.2
143	12/13/2016	8:15:00 AM	83.1	1.1
144	12/13/2016	8:20:00 AM	83.4	0.9
145	12/13/2016	8:25:00 AM	83.5	0.9
146	12/13/2016	8:30:00 AM	83.8	0.7
147	12/13/2016	8:35:00 AM	83.9	0.8
148	12/13/2016	8:40:00 AM	84.0	0.7
149	12/13/2016	8:45:00 AM	84.0	0.7
150	12/13/2016	8:50:00 AM	83.9	0.8
151	12/13/2016	8:55:00 AM	83.9	0.8
152	12/13/2016	9:00:00 AM	83.8	0.7
153	12/13/2016	9:05:00 AM	84.0	0.7
154	12/13/2016	9:10:00 AM	84.1	0.6

Index	Date	Time	%RH	°C
155	12/13/2016	9:15:00 AM	84.1	0.6
156	12/13/2016	9:20:00 AM	84.0	0.5
157	12/13/2016	9:25:00 AM	84.1	0.6
158	12/13/2016	9:30:00 AM	83.5	0.5
159	12/13/2016	9:35:00 AM	83.6	0.4
160	12/13/2016	9:40:00 AM	83.7	0.5
161	12/13/2016	9:45:00 AM	83.7	0.6
162	12/13/2016	9:50:00 AM	83.5	0.6
163	12/13/2016	9:55:00 AM	83.6	0.6
164	12/13/2016	10:00:00 AM	83.7	0.4
165	12/13/2016	10:05:00 AM	83.7	0.5
166	12/13/2016	10:10:00 AM	83.4	0.5
167	12/13/2016	10:15:00 AM	83.5	0.4
168	12/13/2016	10:20:00 AM	83.7	0.4
169	12/13/2016	10:25:00 AM	83.7	0.4
170	12/13/2016	10:30:00 AM	83.8	0.6
171	12/13/2016	10:35:00 AM	83.8	0.6
172	12/13/2016	10:40:00 AM	83.8	0.6
173	12/13/2016	10:45:00 AM	83.8	0.6
174	12/13/2016	10:50:00 AM	83.9	0.6
175	12/13/2016	10:55:00 AM	83.5	0.5
176	12/13/2016	11:00:00 AM	83.3	0.4
177	12/13/2016	11:05:00 AM	83.7	0.4
178	12/13/2016	11:10:00 AM	83.7	0.3
179	12/13/2016	11:15:00 AM	83.7	0.3
180	12/13/2016	11:20:00 AM	83.4	0.2
181	12/13/2016	11:25:00 AM	83.5	0.2
182	12/13/2016	11:30:00 AM	83.3	0.2
183	12/13/2016	11:35:00 AM	83.1	0.1
184	12/13/2016	11:40:00 AM	83.0	0.1
185	12/13/2016	11:45:00 AM	83.0	0.0
186	12/13/2016	11:50:00 AM	83.0	0.1
187	12/13/2016	11:55:00 AM	83.1	0.2
188	12/13/2016	12:00:00 PM	83.0	0.2
189	12/13/2016	12:05:00 PM	83.0	0.3
190	12/13/2016	12:10:00 PM	83.1	0.3
191	12/13/2016	12:15:00 PM	83.0	0.2
192	12/13/2016	12:20:00 PM	82.5	0.1
193	12/13/2016	12:25:00 PM	82.7	0.2
194	12/13/2016	12:30:00 PM	82.7	0.2
195	12/13/2016	12:35:00 PM	82.8	0.2
196	12/13/2016	12:40:00 PM	82.8	0.1
197	12/13/2016	12:45:00 PM	82.7	-0.1
198	12/13/2016	12:50:00 PM	82.6	-0.1
199	12/13/2016	12:55:00 PM	82.5	-0.2
200	12/13/2016	1:00:00 PM	82.3	-0.1
201	12/13/2016	1:05:00 PM	82.4	-0.1
202	12/13/2016	1:10:00 PM	82.2	-0.1
203	12/13/2016	1:15:00 PM	82.1	0.0
204	12/13/2016	1:20:00 PM	82.3	0.2
205	12/13/2016	1:25:00 PM	82.0	0.2
206	12/13/2016	1:30:00 PM	82.2	0.3
207	12/13/2016	1:35:00 PM	81.8	0.2
208	12/13/2016	1:40:00 PM	81.8	0.1
209	12/13/2016	1:45:00 PM	81.8	0.2
210	12/13/2016	1:50:00 PM	81.6	0.2
211	12/13/2016	1:55:00 PM	81.4	0.2
212	12/13/2016	2:00:00 PM	81.4	0.2
213	12/13/2016	2:05:00 PM	81.4	0.3
214	12/13/2016	2:10:00 PM	81.2	0.3
215	12/13/2016	2:15:00 PM	81.2	0.3
216	12/13/2016	2:20:00 PM	81.1	0.3
217	12/13/2016	2:25:00 PM	81.2	0.3
218	12/13/2016	2:30:00 PM	81.0	0.3
219	12/13/2016	2:35:00 PM	81.2	0.4
220	12/13/2016	2:40:00 PM	81.3	0.4
221	12/13/2016	2:45:00 PM	81.4	0.3
222	12/13/2016	2:50:00 PM	81.5	0.3
223	12/13/2016	2:55:00 PM	81.2	0.3
224	12/13/2016	3:00:00 PM	81.3	0.3
225	12/13/2016	3:05:00 PM	81.2	0.3
226	12/13/2016	3:10:00 PM	81.4	0.3
227	12/13/2016	3:15:00 PM	81.3	0.3
228	12/13/2016	3:20:00 PM	81.2	0.4
229	12/13/2016	3:25:00 PM	80.9	0.3
230	12/13/2016	3:30:00 PM	81.0	0.3
231	12/13/2016	3:35:00 PM	81.0	0.3

Index	Date	Time	%RH	°C
232	12/13/2016	3:40:00 PM	80.9	0.4
233	12/13/2016	3:45:00 PM	80.7	0.4
234	12/13/2016	3:50:00 PM	80.4	0.4
235	12/13/2016	3:55:00 PM	80.5	0.3
236	12/13/2016	4:00:00 PM	80.5	0.4
237	12/13/2016	4:05:00 PM	80.2	0.4
238	12/13/2016	4:10:00 PM	80.2	0.3
239	12/13/2016	4:15:00 PM	80.1	0.2
240	12/13/2016	4:20:00 PM	80.0	0.1
241	12/13/2016	4:25:00 PM	80.1	0.0
242	12/13/2016	4:30:00 PM	80.0	-0.1
243	12/13/2016	4:35:00 PM	80.4	-0.1
244	12/13/2016	4:40:00 PM	80.2	-0.2
245	12/13/2016	4:45:00 PM	80.2	-0.2
246	12/13/2016	4:50:00 PM	80.3	-0.3
247	12/13/2016	4:55:00 PM	80.3	-0.5
248	12/13/2016	5:00:00 PM	80.5	-0.6
249	12/13/2016	5:05:00 PM	80.5	-0.8
250	12/13/2016	5:10:00 PM	80.8	-0.9
251	12/13/2016	5:15:00 PM	80.6	-0.9
252	12/13/2016	5:20:00 PM	80.9	-0.9
253	12/13/2016	5:25:00 PM	80.7	-1.1
254	12/13/2016	5:30:00 PM	80.6	-1.2
255	12/13/2016	5:35:00 PM	80.8	-1.2
256	12/13/2016	5:40:00 PM	80.9	-1.3
257	12/13/2016	5:45:00 PM	80.8	-1.4
258	12/13/2016	5:50:00 PM	81.1	-1.6
259	12/13/2016	5:55:00 PM	81.3	-1.6
260	12/13/2016	6:00:00 PM	81.6	-1.6
261	12/13/2016	6:05:00 PM	81.3	-1.6
262	12/13/2016	6:10:00 PM	80.9	-1.7
263	12/13/2016	6:15:00 PM	81.0	-1.9
264	12/13/2016	6:20:00 PM	81.5	-1.9
265	12/13/2016	6:25:00 PM	81.2	-1.9
266	12/13/2016	6:30:00 PM	80.7	-2.1
267	12/13/2016	6:35:00 PM	80.8	-2.1
268	12/13/2016	6:40:00 PM	81.3	-2.4
269	12/13/2016	6:45:00 PM	81.8	-2.3
270	12/13/2016	6:50:00 PM	81.3	-2.3
271	12/13/2016	6:55:00 PM	81.6	-2.4
272	12/13/2016	7:00:00 PM	81.0	-2.4
273	12/13/2016	7:05:00 PM	81.2	-2.4
274	12/13/2016	7:10:00 PM	81.4	-2.6
275	12/13/2016	7:15:00 PM	81.3	-2.7
276	12/13/2016	7:20:00 PM	80.8	-2.8
277	12/13/2016	7:25:00 PM	81.0	-2.8
278	12/13/2016	7:30:00 PM	80.4	-2.9
279	12/13/2016	7:35:00 PM	80.7	-3.0
280	12/13/2016	7:40:00 PM	80.6	-3.2
281	12/13/2016	7:45:00 PM	80.3	-4.2
282	12/13/2016	7:50:00 PM	82.0	-4.5
283	12/13/2016	7:55:00 PM	82.4	-4.7
284	12/13/2016	8:00:00 PM	83.0	-4.9
285	12/13/2016	8:05:00 PM	83.0	-5.1
286	12/13/2016	8:10:00 PM	83.0	-5.2
287	12/13/2016	8:15:00 PM	83.7	-5.3
288	12/13/2016	8:20:00 PM	84.4	-5.3
289	12/13/2016	8:25:00 PM	84.7	-5.3
290	12/13/2016	8:30:00 PM	84.6	-5.2
291	12/13/2016	8:35:00 PM	84.4	-5.3
292	12/13/2016	8:40:00 PM	85.1	-5.4
293	12/13/2016	8:45:00 PM	85.3	-5.5
294	12/13/2016	8:50:00 PM	85.5	-5.6
295	12/13/2016	8:55:00 PM	85.9	-5.4
296	12/13/2016	9:00:00 PM	86.0	-5.2
297	12/13/2016	9:05:00 PM	85.1	-5.1
298	12/13/2016	9:10:00 PM	84.5	-5.4
299	12/13/2016	9:15:00 PM	84.8	-5.3
300	12/13/2016	9:20:00 PM	84.7	-5.2
301	12/13/2016	9:25:00 PM	84.5	-5.3
302	12/13/2016	9:30:00 PM	84.8	-5.2
303	12/13/2016	9:35:00 PM	84.9	-5.2
304	12/13/2016	9:40:00 PM	84.5	-5.3
305	12/13/2016	9:45:00 PM	84.2	-5.3
306	12/13/2016	9:50:00 PM	83.6	-5.8
307	12/13/2016	9:55:00 PM	83.1	-6.4
308	12/13/2016	10:00:00 PM	83.5	-6.7

Index	Date	Time	%RH	°C
309	12/13/2016	10:05:00 PM	83.2	-7.0
310	12/13/2016	10:10:00 PM	83.2	-7.3
311	12/13/2016	10:15:00 PM	83.1	-7.7
312	12/13/2016	10:20:00 PM	83.2	-7.8
313	12/13/2016	10:25:00 PM	83.0	-8.1
314	12/13/2016	10:30:00 PM	83.7	-8.2
315	12/13/2016	10:35:00 PM	84.2	-7.9
316	12/13/2016	10:40:00 PM	84.3	-7.7
317	12/13/2016	10:45:00 PM	84.5	-7.7
318	12/13/2016	10:50:00 PM	85.3	-7.7
319	12/13/2016	10:55:00 PM	85.4	-7.7
320	12/13/2016	11:00:00 PM	85.1	-7.7
321	12/13/2016	11:05:00 PM	85.5	-7.7
322	12/13/2016	11:10:00 PM	85.4	-7.8
323	12/13/2016	11:15:00 PM	85.4	-8.1
324	12/13/2016	11:20:00 PM	85.5	-7.9
325	12/13/2016	11:25:00 PM	85.0	-7.9
326	12/13/2016	11:30:00 PM	84.6	-7.8
327	12/13/2016	11:35:00 PM	83.8	-7.8
328	12/13/2016	11:40:00 PM	83.5	-7.8
329	12/13/2016	11:45:00 PM	83.7	-7.8
330	12/13/2016	11:50:00 PM	83.3	-7.6
331	12/13/2016	11:55:00 PM	82.6	-7.6
332	12/14/2016	12:00:00 AM	82.5	-7.7
333	12/14/2016	12:05:00 AM	83.1	-7.8
334	12/14/2016	12:10:00 AM	83.5	-7.9
335	12/14/2016	12:15:00 AM	84.1	-8.0
336	12/14/2016	12:20:00 AM	84.2	-8.1
337	12/14/2016	12:25:00 AM	84.1	-8.1
338	12/14/2016	12:30:00 AM	83.5	-8.0
339	12/14/2016	12:35:00 AM	83.1	-7.9
340	12/14/2016	12:40:00 AM	83.0	-7.7
341	12/14/2016	12:45:00 AM	82.5	-7.7
342	12/14/2016	12:50:00 AM	82.7	-7.8
343	12/14/2016	12:55:00 AM	82.8	-8.1
344	12/14/2016	1:00:00 AM	83.4	-8.2
345	12/14/2016	1:05:00 AM	82.8	-8.2
346	12/14/2016	1:10:00 AM	83.2	-8.1
347	12/14/2016	1:15:00 AM	83.8	-7.9
348	12/14/2016	1:20:00 AM	83.9	-7.9
349	12/14/2016	1:25:00 AM	84.1	-8.1
350	12/14/2016	1:30:00 AM	84.7	-8.1
351	12/14/2016	1:35:00 AM	85.0	-8.2
352	12/14/2016	1:40:00 AM	85.1	-8.2
353	12/14/2016	1:45:00 AM	85.3	-8.2
354	12/14/2016	1:50:00 AM	85.3	-8.2
355	12/14/2016	1:55:00 AM	85.3	-8.2
356	12/14/2016	2:00:00 AM	85.4	-8.2
357	12/14/2016	2:05:00 AM	85.7	-8.3
358	12/14/2016	2:10:00 AM	85.7	-8.2
359	12/14/2016	2:15:00 AM	85.3	-8.0
360	12/14/2016	2:20:00 AM	84.9	-8.0
361	12/14/2016	2:25:00 AM	85.3	-8.1
362	12/14/2016	2:30:00 AM	85.2	-7.9
363	12/14/2016	2:35:00 AM	84.3	-7.9
364	12/14/2016	2:40:00 AM	83.8	-7.8
365	12/14/2016	2:45:00 AM	83.6	-7.9
366	12/14/2016	2:50:00 AM	83.8	-7.9
367	12/14/2016	2:55:00 AM	83.6	-7.9
368	12/14/2016	3:00:00 AM	83.4	-7.9
369	12/14/2016	3:05:00 AM	83.3	-7.9
370	12/14/2016	3:10:00 AM	83.4	-8.0
371	12/14/2016	3:15:00 AM	83.5	-8.0
372	12/14/2016	3:20:00 AM	83.4	-7.9
373	12/14/2016	3:25:00 AM	83.1	-7.9
374	12/14/2016	3:30:00 AM	83.1	-7.9
375	12/14/2016	3:35:00 AM	83.0	-7.9
376	12/14/2016	3:40:00 AM	82.8	-8.1
377	12/14/2016	3:45:00 AM	82.7	-8.2
378	12/14/2016	3:50:00 AM	82.7	-8.1
379	12/14/2016	3:55:00 AM	82.5	-8.1
380	12/14/2016	4:00:00 AM	82.5	-8.5
381	12/14/2016	4:05:00 AM	82.8	-8.4
382	12/14/2016	4:10:00 AM	82.8	-8.4
383	12/14/2016	4:15:00 AM	82.6	-8.4
384	12/14/2016	4:20:00 AM	82.5	-8.4
385	12/14/2016	4:25:00 AM	82.6	-8.4

Index	Date	Time	%RH	°C
386	12/14/2016	4:30:00 AM	82.9	-8.3
387	12/14/2016	4:35:00 AM	82.9	-8.4
388	12/14/2016	4:40:00 AM	83.2	-8.3
389	12/14/2016	4:45:00 AM	83.7	-8.5
390	12/14/2016	4:50:00 AM	84.2	-8.4
391	12/14/2016	4:55:00 AM	84.1	-8.4
392	12/14/2016	5:00:00 AM	83.7	-8.4
393	12/14/2016	5:05:00 AM	83.9	-8.3
394	12/14/2016	5:10:00 AM	83.8	-8.3
395	12/14/2016	5:15:00 AM	84.0	-8.2
396	12/14/2016	5:20:00 AM	84.1	-8.3
397	12/14/2016	5:25:00 AM	84.1	-8.3
398	12/14/2016	5:30:00 AM	84.2	-8.4
399	12/14/2016	5:35:00 AM	84.3	-8.4
400	12/14/2016	5:40:00 AM	84.1	-8.3
401	12/14/2016	5:45:00 AM	83.9	-8.4
402	12/14/2016	5:50:00 AM	84.0	-8.3
403	12/14/2016	5:55:00 AM	83.9	-8.3
404	12/14/2016	6:00:00 AM	84.0	-8.3
405	12/14/2016	6:05:00 AM	84.2	-8.2
406	12/14/2016	6:10:00 AM	83.9	-8.2
407	12/14/2016	6:15:00 AM	83.8	-8.2
408	12/14/2016	6:20:00 AM	84.0	-8.2
409	12/14/2016	6:25:00 AM	83.9	-8.2
410	12/14/2016	6:30:00 AM	83.7	-8.2
411	12/14/2016	6:35:00 AM	83.6	-8.3
412	12/14/2016	6:40:00 AM	83.5	-8.3
413	12/14/2016	6:45:00 AM	83.7	-8.4
414	12/14/2016	6:50:00 AM	83.6	-8.3
415	12/14/2016	6:55:00 AM	83.9	-8.3
416	12/14/2016	7:00:00 AM	83.5	-8.4
417	12/14/2016	7:05:00 AM	83.4	-8.3
418	12/14/2016	7:10:00 AM	83.7	-8.3
419	12/14/2016	7:15:00 AM	83.7	-8.4
420	12/14/2016	7:20:00 AM	83.6	-8.4
421	12/14/2016	7:25:00 AM	83.6	-8.4
422	12/14/2016	7:30:00 AM	83.6	-8.3
423	12/14/2016	7:35:00 AM	83.7	-8.3
424	12/14/2016	7:40:00 AM	83.7	-8.2
425	12/14/2016	7:45:00 AM	83.8	-8.2
426	12/14/2016	7:50:00 AM	84.1	-8.2
427	12/14/2016	7:55:00 AM	84.2	-8.2
428	12/14/2016	8:00:00 AM	84.2	-8.2
429	12/14/2016	8:05:00 AM	84.4	-8.2
430	12/14/2016	8:10:00 AM	84.5	-8.3
431	12/14/2016	8:15:00 AM	84.4	-8.3
432	12/14/2016	8:20:00 AM	84.7	-8.2
433	12/14/2016	8:25:00 AM	84.8	-8.3
434	12/14/2016	8:30:00 AM	85.0	-8.2
435	12/14/2016	8:35:00 AM	84.4	-8.1
436	12/14/2016	8:40:00 AM	84.2	-8.1
437	12/14/2016	8:45:00 AM	84.5	-8.1
438	12/14/2016	8:50:00 AM	84.6	-8.2
439	12/14/2016	8:55:00 AM	84.7	-8.2
440	12/14/2016	9:00:00 AM	84.5	-8.2
441	12/14/2016	9:05:00 AM	84.5	-8.2
442	12/14/2016	9:10:00 AM	84.5	-8.2
443	12/14/2016	9:15:00 AM	84.6	-8.0
444	12/14/2016	9:20:00 AM	84.1	-7.9
445	12/14/2016	9:25:00 AM	84.0	-7.9
446	12/14/2016	9:30:00 AM	84.0	-7.9
447	12/14/2016	9:35:00 AM	84.5	-7.7
448	12/14/2016	9:40:00 AM	84.6	-7.7
449	12/14/2016	9:45:00 AM	84.7	-7.6
450	12/14/2016	9:50:00 AM	84.8	-7.5
451	12/14/2016	9:55:00 AM	84.8	-7.6
452	12/14/2016	10:00:00 AM	85.0	-7.4
453	12/14/2016	10:05:00 AM	84.9	-7.4
454	12/14/2016	10:10:00 AM	84.9	-7.3
455	12/14/2016	10:15:00 AM	84.8	-7.3
456	12/14/2016	10:20:00 AM	84.7	-7.3
457	12/14/2016	10:25:00 AM	85.3	-7.3
458	12/14/2016	10:30:00 AM	85.5	-7.3
459	12/14/2016	10:35:00 AM	85.6	-7.2
460	12/14/2016	10:40:00 AM	85.4	-7.1
461	12/14/2016	10:45:00 AM	85.4	-6.9
462	12/14/2016	10:50:00 AM	85.3	-6.8

Index	Date	Time	%RH	°C
463	12/14/2016	10:55:00 AM	85.3	-6.7
464	12/14/2016	11:00:00 AM	85.4	-6.7
465	12/14/2016	11:05:00 AM	85.4	-6.7
466	12/14/2016	11:10:00 AM	85.4	-6.7
467	12/14/2016	11:15:00 AM	85.4	-6.6
468	12/14/2016	11:20:00 AM	85.5	-6.5
469	12/14/2016	11:25:00 AM	85.5	-6.4
470	12/14/2016	11:30:00 AM	85.3	-6.4
471	12/14/2016	11:35:00 AM	85.3	-6.3
472	12/14/2016	11:40:00 AM	85.4	-6.3
473	12/14/2016	11:45:00 AM	85.5	-6.2
474	12/14/2016	11:50:00 AM	85.4	-6.2
475	12/14/2016	11:55:00 AM	85.4	-6.1
476	12/14/2016	12:00:00 PM	85.4	-5.9
477	12/14/2016	12:05:00 PM	85.5	-5.8
478	12/14/2016	12:10:00 PM	85.4	-5.8
479	12/14/2016	12:15:00 PM	85.4	-5.7
480	12/14/2016	12:20:00 PM	85.3	-5.6
481	12/14/2016	12:25:00 PM	85.5	-5.5
482	12/14/2016	12:30:00 PM	85.5	-5.4
483	12/14/2016	12:35:00 PM	85.3	-5.4
484	12/14/2016	12:40:00 PM	85.5	-5.2
485	12/14/2016	12:45:00 PM	85.6	-5.1
486	12/14/2016	12:50:00 PM	85.5	-5.1
487	12/14/2016	12:55:00 PM	85.5	-5.0
488	12/14/2016	1:00:00 PM	85.6	-4.9
489	12/14/2016	1:05:00 PM	85.6	-4.8
490	12/14/2016	1:10:00 PM	85.6	-4.7
491	12/14/2016	1:15:00 PM	85.3	-4.7
492	12/14/2016	1:20:00 PM	85.4	-4.6
493	12/14/2016	1:25:00 PM	85.5	-4.4
494	12/14/2016	1:30:00 PM	85.4	-4.3
495	12/14/2016	1:35:00 PM	85.3	-4.3
496	12/14/2016	1:40:00 PM	85.1	-4.3
497	12/14/2016	1:45:00 PM	85.3	-4.2
498	12/14/2016	1:50:00 PM	85.1	-4.3
499	12/14/2016	1:55:00 PM	85.3	-4.2
500	12/14/2016	2:00:00 PM	85.2	-4.2
501	12/14/2016	2:05:00 PM	85.2	-4.1
502	12/14/2016	2:10:00 PM	85.2	-4.1
503	12/14/2016	2:15:00 PM	85.3	-4.0
504	12/14/2016	2:20:00 PM	85.6	-3.8
505	12/14/2016	2:25:00 PM	85.5	-3.8
506	12/14/2016	2:30:00 PM	85.3	-3.8
507	12/14/2016	2:35:00 PM	85.4	-3.8
508	12/14/2016	2:40:00 PM	85.4	-3.7
509	12/14/2016	2:45:00 PM	85.1	-3.8
510	12/14/2016	2:50:00 PM	85.2	-3.7
511	12/14/2016	2:55:00 PM	85.1	-3.7
512	12/14/2016	3:00:00 PM	85.1	-3.6
513	12/14/2016	3:05:00 PM	84.8	-3.6
514	12/14/2016	3:10:00 PM	84.7	-3.5
515	12/14/2016	3:15:00 PM	84.7	-3.4
516	12/14/2016	3:20:00 PM	84.7	-3.4
517	12/14/2016	3:25:00 PM	84.9	-3.3
518	12/14/2016	3:30:00 PM	84.8	-3.3
519	12/14/2016	3:35:00 PM	84.8	-3.2
520	12/14/2016	3:40:00 PM	84.6	-3.2
521	12/14/2016	3:45:00 PM	84.9	-3.1
522	12/14/2016	3:50:00 PM	84.6	-3.1
523	12/14/2016	3:55:00 PM	84.6	-2.9
524	12/14/2016	4:00:00 PM	84.5	-2.9
525	12/14/2016	4:05:00 PM	84.3	-2.9
526	12/14/2016	4:10:00 PM	84.2	-2.9
527	12/14/2016	4:15:00 PM	84.5	-2.9
528	12/14/2016	4:20:00 PM	84.6	-2.9
529	12/14/2016	4:25:00 PM	84.6	-2.9
530	12/14/2016	4:30:00 PM	84.6	-2.9
531	12/14/2016	4:35:00 PM	84.5	-2.9
532	12/14/2016	4:40:00 PM	84.5	-3.0
533	12/14/2016	4:45:00 PM	84.7	-2.9
534	12/14/2016	4:50:00 PM	84.8	-3.0
535	12/14/2016	4:55:00 PM	84.8	-2.9
536	12/14/2016	5:00:00 PM	84.9	-2.9
537	12/14/2016	5:05:00 PM	85.0	-2.9
538	12/14/2016	5:10:00 PM	85.2	-2.9
539	12/14/2016	5:15:00 PM	85.3	-2.9

Index	Date	Time	%RH	°C
540	12/14/2016	5:20:00 PM	85.2	-2.9
541	12/14/2016	5:25:00 PM	85.0	-2.9
542	12/14/2016	5:30:00 PM	85.0	-2.9
543	12/14/2016	5:35:00 PM	85.0	-2.9
544	12/14/2016	5:40:00 PM	85.0	-2.9
545	12/14/2016	5:45:00 PM	85.1	-2.9
546	12/14/2016	5:50:00 PM	85.2	-2.9
547	12/14/2016	5:55:00 PM	100.0	17.4

Summary

LogTag ID	0010017494	
User ID	cmro II STATIE TROACA 09 06	
LogTag battery	OK	
Non alert range	10.0 to 100.0 %RH	-30.0 to 50.0 °C
Time zone	UTC +02:00, standard time	
Number of readings	547	
Reading interval	5 Minutes	
Number of starts	113	
First reading	12/12/2016 8:25:00 PM	
Last reading	12/14/2016 5:55:00 PM	
Elapsed Time	1 Day, 21 Hours, 30 Minutes	
Reading range	74.6 to 100.0 %RH	-8.5 to 17.4 °C
Average reading	82.7 %RH	-2.2 °C
Standard Deviation (S)	2.3 %RH	4.8 °C
Degree Minutes below lower alert	0.00 %RH-Minutes	0.00 °C-Minutes
Degree Minutes above upper alert	0.00 %RH-Minutes	0.00 °C-Minutes
Mean Kinetic Temperature	-0.72 °C	
Time below lower alert	None	None
Time above upper alert	None	None
Time not in alert	1 Day, 21 Hours, 30 Minutes	1 Day, 21 Hours, 30 Minutes